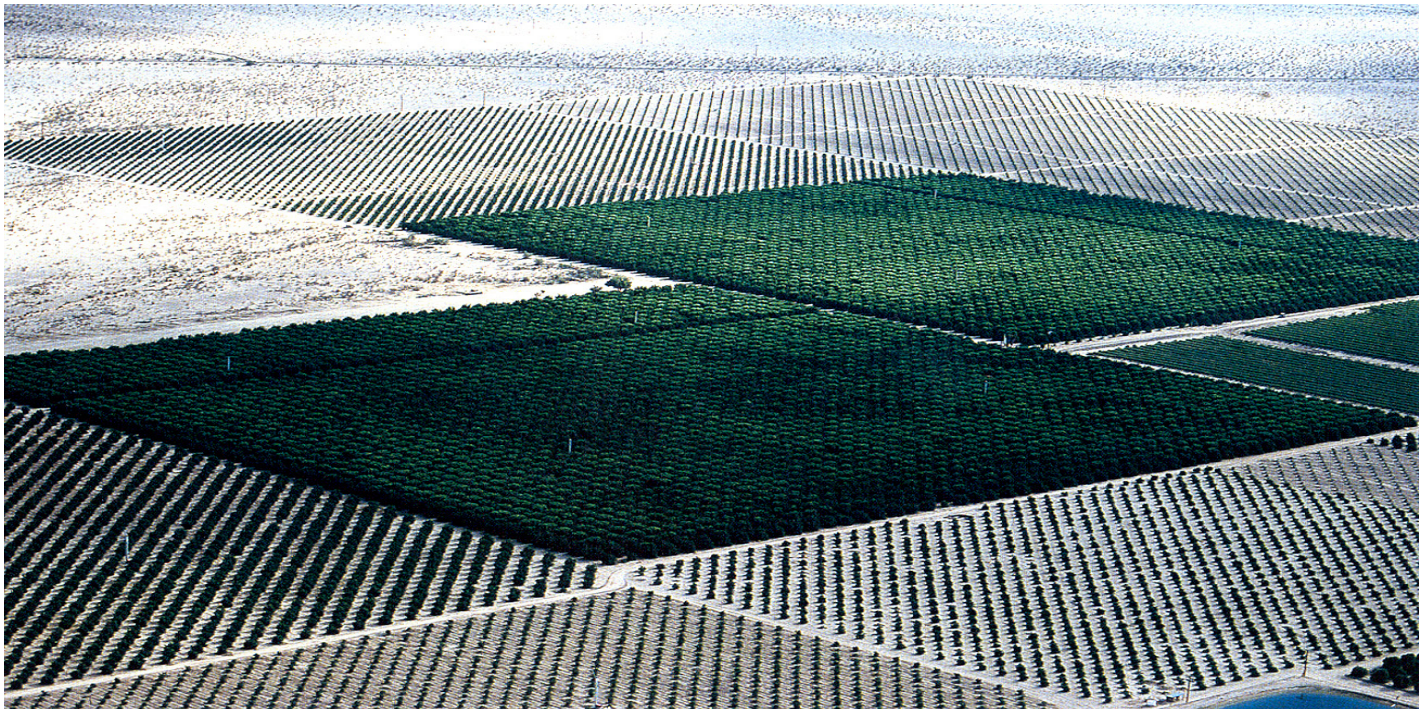


**field operations**

landscape architecture . urban design . planning . ecology

475 tenth avenue  
10th floor  
new york, new york 10018  
t. 212 433 1450  
f. 212 433 1451

portfolio



**fo**

## field operations

**1 field** \ fē(e)ld\ n [ME, fr. OE feld; akin to OHG feld field, OE flōr floor] 1 a: an open land area free of woods and buildings; b:(1) an area of cleared enclosed land used for cultivation or pasture <a ~ of wheat> (2) land containing a natural resource <coal ~ > c: the place where a battle is fought; also: battle; d: a large unbroken expanse (as of ice); 2 a: an area or division of an activity <a lawyer eminent in his ~ > b: the sphere of practical operation outside a laboratory, office, or factory <geologists working in the ~ > c: an area for military exercises or maneuvers; d:(1) an area constructed, equipped, or marked for sports; (2) the portion of an indoor or outdoor sports area enclosed by the running track and on which are conducted field events; (3) either of the three sections of a baseball outfield <hits to all ~ s > 3: a space on which something is drawn or projected: as a: the space on the surface of a coin, medal, or seal that does not contain the design; b: the ground of each division in a flag; c: the whole surface of an escutcheon; 4: the individuals that make up all or part of the participants in a sports activity; esp: all participants with the exception of the favorite or the winner in a contest where more than two are entered; 5: a complex of forces that serve as causative agents in human behavior; 6 a: a set of mathematical elements that is subject to two binary operations the second of which is distributive relative to the first and both of which yield an element and that constitutes a commutative group under the first operation and also under the second if the zero or unit element under the first is omitted; b: a region or space in which a given effect (or magnetism) exists; 7: the area visible through the lens of an optical instrument; 8: a series of drain tiles and an absorption area; 9: a particular area (as a column or set of columns on a punch card) in which the same type of information is regularly recorded.

**2 field** vi 1a: to catch or pick up (a batted ball) and usually throw to a teammate; b: to give an impromptu answer or solution to <the senator ~ ed the reporters' questions> 2: to put into the field <~ an army> <~ a team>; also: to enter in competition ~ vi: to play as a fielder.

**3 field** adj of or relating to a field, as a: growing in or inhabiting the fields or open country; b: made, conducted, or used in the field <~ operations> c: operating or active in the field <a ~ agent>

**overview**

**Field Operations** is an innovative, award-winning landscape architecture, urban design, planning and ecology practice, based in New York City.

Founded in 1998 by James Corner, the mandate of the practice is to create intelligent, high-quality design solutions for cities, landscapes and buildings. At all scales of the designed environment, Field Operations seeks an integrated synthesis of landscape, infrastructure, ecology, architecture, transportation, economic development and city life. Synthesis is achieved through a creative, collaborative approach, working closely with architects, planners, engineers, ecologists and artists, as well as public agencies, project stakeholders and communities.

Field Operations' creative expertise is reflected in a diverse range of high-profile, complex project types, from the design of entire sectors of cities to intimate garden spaces; the design of large, new public parks to housing and mixed-use private developments; the reclamation of landfills, derelict brownfield sites and other post-industrial landscapes for new public uses and private development to the preservation of natural reserves. In each case, the practice seeks to respond to the unique circumstances of each project and craft built works of lasting distinction, striving to produce designs that exceed the goals, aspirations and needs of the client. We are committed to designs that are specific and unique, to contemporary solutions that work, and to the production of maximum effects with minimal means.

The intelligence of Field Operations' approach has been recognized with the American Academy of Arts and Letters Award for Architecture; the Daimler-Chrysler Award for Design Innovation; the Architectural League of New York Design Award; and other professional design awards and prizes. The work of the practice has been published and exhibited internationally, including the Venice Biennale; ArchiLAB, Paris; the Royal College of Art, London; and the Museum of Modern Art, New York.

**vision**

**Networked Practices** - As cities grow and change under the pressures of shifting economic, technological and social forces, it is increasingly difficult for traditional design disciplines to adequately address these new complex conditions. Field Operations embraces complexity in order to synthesize the insights of many related disciplines: architecture, landscape architecture, urban design, ecology, infrastructure, transportation, economic analysis, scenario planning, art, media and communications. The structure of the office is fully collaborative, and the working methodology encourages feedback and interaction. The aim is to discover novel solutions to the challenges of the contemporary city through creative affiliations - new ecologies of creativity.

**Ecology** - Landscapes and cities today exist within larger and more complex global ecologies. Even the smallest garden or building is an active agent in a large-scale environment changing over time. We view all sites and programs as comprising complex ecologies -- never bounded or final, but rather fluid, co-extensive and continually emergent. Our work is informed by the theory and practice of ecology in the broadest sense, encompassing social as well as natural ecologies, thereby supporting projects that are self-sustaining, adaptive and resilient to change. Our work is also characterized by a thorough and innovative technical approach toward ecological restoration, ecological technologies and long-term management practices.

**Design, Identity, Communication** - Through extensive use of diagrams, models, drawings and imagery, Field Operations works to communicate ideas and expand the field of public exchange. Rather than scripting singular narratives of place or program, we seek to create an open field that enables users and inhabitants to inscribe their own scenarios of occupation and identity. And, as a working methodology, this emphasis upon visualization, construction and direct spatial experience fosters communication and dialogue among participants and designers alike, effectively generating new forms of possibility. We see the role of design as the creation of distinctive public spaces that are in turn activated through those who use them, out there, in the field.

## **field operations**

### **practice**

**The practice** is a New York corporation comprised of architects, landscape architects, urban designers, planners and media artists.

James Corner is the founder and director of Field Operations. With over 20 years of experience in the field, he is an energetic leader of all design projects in the office. He has collaborated closely with many leading designers—architects Stan Allen, Renzo Piano, Will Bruder, Stephen Holl, Abalos & Herreros, Enrique Norten, Roger Duffy and Marilyn Taylor of Skidmore, Owings & Merrill, and artists Kiki Smith, Olafur Eliasson, Ellen Zimmerman, Jessica Stockholder, Adrian Hemming, Michael Horsham and Tomato.

Together with 20 exceptionally talented design and planning professionals in the office -- many of whom are international in origin and outlook, and have worked on a variety of important projects in other leading practices around the world -- the creative expertise and resources of Field Operations is unsurpassed. The practice sustains the highest levels of artistic creativity combined with professional responsiveness, building projects that are as imaginative and dynamic as they are responsive to client needs, communication, schedule, deadlines, cost, feasibility and ease of implementation.

Equipped with state-of-the-art computers, graphic imaging programs and model-making facilities, Field Operations produces not only the highest quality design documentation for plans and construction, but also powerful renderings, models, graphic designs, websites, books and presentations useful for conveying design ideas to a wide range of audiences.

**biography**

**James Corner** is a registered landscape architect and urban designer, and Founder and Director of Field Operations. He is also Chair and Professor in the Department of Landscape Architecture and Regional Planning at the University of Pennsylvania Graduate School of Design. He was educated at Manchester Metropolitan University, England (BA in architecture and landscape with first class honors, 1982) and the University of Pennsylvania Graduate School of Fine Arts (MLA/UD 1986). Prior to teaching and founding Field Operations, he worked for Wallace, Roberts, and Todd on the New Jersey Hudson River Waterfront Redevelopment, for Richard Rogers and Partners on the redevelopment of the Royal Docks in London, and for Gillespie and Partners on the design of the International Garden Festival Park in Liverpool.

His work has been recognized with numerous awards: the NYC Arts Commission Award for Excellence in Design (2005); the American Academy of Arts and Letters, Academy Award in Architecture (2004); the Daimler-Chrysler Award for Design Innovation (2000); the Architectural League of New York Design Award (2000); and Fellow of the Urban Design Institute (1999).

Corner's design work is complemented by a body of writing on landscape architectural design and urbanism. He is author with Alex MacLean of *Taking Measures Across the American Landscape* (Yale, 1996), which received the AIA International Book of the Year Award for 1997. He is also the editor of *Recovering Landscape: Essays in Contemporary Landscape Architecture* (Princeton, 1999), which focuses on the revitalization of landscape architecture as a creative cultural practice. Other writings include essays in *Landscape Urbanism*, Mohsen Mostafavi, ed. (Architectural Association, 2003); *Mappings*, edited by Denis Cosgrove (Reaktion, 1999); and *Ecological Design and Planning*, George Thompson and Frederick Steiner, eds. (Wiley, 1996). He has lectured and exhibited work internationally, including the Museum of Modern Art, New York; the Museum of Modern Art, San Francisco; the Art Center, Pasadena; the National Museum, Washington; Max Protetch Gallery, New York; the Canadian Center for Architecture, Montreal; the Architectural Association, London; the Royal College of Art, London; the Royal Danish Academy of Art, Copenhagen; and ArchiLAB, Paris.

## field operations

### biography

**Tom Jost**, AICP, is Managing Director and Director of Urban Planning at Field Operations. He holds a Masters of Urban Design from Pratt Institute (1993), and a BA in Economics from Lehigh University (1987). Prior to joining Field Operations, he was Senior Supervising Urban Planner in the New York office of Parsons Brinkerhoff, and Principal in the New York office of HOK for four years, where he was Project Manager through design and construction on the \$100M St. George Ferry Terminal Project, Staten Island, a sustainable intermodal center design and recipient of the 2001 NYC Excellence in Design Award, and project manager for the LEED accredited Winrock Headquarters Building in Little Rock, Arkansas. Other work includes Project Manager for the New York City Freight Movement Investment Study, which included a comprehensive analysis for a new \$2B freight tunnel connecting NYC to New Jersey; Urban Planner with Peter Eisenman and David Childs on the IFCCA award winning project for West Midtown Manhattan; Urban Planner on the New York City Lower Manhattan Space Plan; and creator and designer of the 50-mile Staten Island Bikeway and Cultural Trail. He served as Director of Transportation for the Staten Island Borough Presidents office for four years. With wide-ranging experience in both the public and private sectors, he has developed unique expertise in the strategic and management aspects of leading complex, large-scale urban projects. He is a LEED 2.0 Accredited Professional Planner since 2002, AICP since 1999, and serves as the Co-Chair of the American Planning Association NYC Metro Economic Development Committee.

## **field operations**

### **senior associates**

**Tae-Wook Cha**, ASLA is a Senior Associate at Field Operations. He is a registered landscape architect and holds a BA in Horticulture from Korea University (1991), an MLA from Seoul National University (1993), and an MLA from Harvard University (1998). Prior to joining Field Operations, he worked for Hargreaves Associates for six years where he was a project manager for the \$75M, 80-acre Louisville Waterfront Park, recipient of numerous national and professional design awards; the National Gallery of Australia; Shaw Center for the Arts, and a Ski House in Montana. He also worked as a project landscape architect for numerous other projects including the University of Cincinnati Campus, the Clinton Presidential Library, and Drexel University Masterplan. Before coming to the United States, he worked as a landscape architect for two years in Seoul, Korea, where he designed and managed the POSCO Headquarter and Samsung Medical Center projects.

**Ellen Neises** is a Senior Associate at Field Operations. She has a BS from Carnegie Mellon University (1988), a Masters in Public Policy from Harvard University (1990), and an MLA from the University of Pennsylvania (2002), where she was the recipient of the Ian McHarg Prize for Excellence. Prior to joining Field Operations, she worked for Donna Walcavage Landscape Architecture + Urban Design on the design of a waterfront park in Sunset Park, Brooklyn; and taught graduate design studios in the Department of Landscape Architecture at the University of Pennsylvania. Prior to earning an MLA, she had nine years of experience managing a variety of economic development and public policy projects.

**Lisa Switkin** is a landscape and urban designer at Field Operations. She holds a BA in Urban Planning from the University of Illinois (1996) and an MLA from the University of Pennsylvania (2002). Prior to joining Field Operations, she worked as a landscape architect for W Architecture and Landscape Architecture in New York on design development for the West Harlem Waterfront Project; for Marpillero Pollak Architects in New York on schematic design for Eib's Pond Park in Staten Island, which won the ASLA Design Award and the AIA Staten Island Award in 2003; and for Abel Bainnson Butz in New York on construction documents for Hudson River Park. Prior to earning an MLA, Lisa worked on economic development plans for Champaign, Illinois and community stabilization plans for East St. Louis neighborhoods. Recently, her team won an Honorable Mention and the New York Heritage Award for planting design for their entry in the New York City High Line design competition.



## **field operations**

### **senior associates**

**Karen Tamir**, senior associate, is a landscape architect and an urban designer at Field Operations. She holds a BFA, with an emphasis in Industrial Design (1994) and a MLA from the University of Pennsylvania (2001), where she was awarded the Ian L. McHarg Prize for excellence in design that best exemplifies ecological ideals in contemporary and culturally pertinent ways, the Paul Phillipe Cret Prize for her final-year thesis project, and the ASLA Honor Award for outstanding potential for contributions to the profession. Karen has worked on several competitions including Fresh Kills Landfill in Staten Island and the Arroyo Parkway in Pasadena-- both earned first prize winning Field Operations the commission. Karen is currently the Project Manager for the University of Puerto Rico Botanical Garden, a 250-acre site in San Juan, Puerto Rico. Prior to joining Field Operations, Karen worked at Hargreaves Associates in New York where she worked and co-managed the Charles Hostler Student Center at the American University of Beirut, Lebanon, seeing the project from concept to construction documentation.

## field operations

### associates

**Sierra Bainbridge** is a landscape and architectural designer at Field Operations. She holds a BA from Smith College in Art and Architectural History (1999) and MLA and MArch degrees from the University of Pennsylvania (2004) where she received an ASLA Honor Award and the Ian McHarg Prize for design excellence. Prior to joining Field Operations, she worked for Peter Walker and Partners in San Francisco on the Nasher Foundation Sculpture Center in Dallas and on a private ranch, also in Texas. She also worked on various projects while at SITE in NYC, and on James Wines' publication *Green Architecture* (Tashen, 2000).

**Silvia Benedito** is a registered architect and an Associate at Field Operations. She has a BArch from Coimbra University, a Bachelors degree in music from Coimbra Conservatory, both in Portugal, and a Masters in Architecture and Urban Design from Harvard University. Prior to joining Field Operations in 2005, she worked as an urban designer at Skidmore Owings and Merrill on a master plan for a 700-unit residential development in Denver, a master plan for Willetts Point in Queens, and with Renzo Piano and Field Operations, the urban plan for expansion of the Columbia University campus. Before SOM, Silvia worked for a regional waterfront planning ministry in southern Portugal, and for three years prior to that as an architect at Hestnes Ferreira and AU Office in Lisbon where she worked on an urban plan for low-income housing, a town master plan (580 acres), and on concept design and construction documents for three 40 to 72-unit residential developments, a school, library, and tourist information center.

**Marc Brossa** is a registered architect and an Associate at Field Operations. He has a BArch from the Polytechnic University of Catalunya in Barcelona, Spain and a Master of Science and Architecture in Urban Design from Columbia University. He has been the urban designer on Field Operations' University of Puerto Rico campus master plan team. Prior to joining FO in 2005, Marc worked for W Architecture in New York on the master plan for a tobacco complex conversion in Durham, NC and as project architect for two buildings within the complex. He has also worked for Weisz + Yoes Studio in New York, StoSS Landscape Urbanism in Boston, and Jornet-Llop-Pastor Arquitectes and Jan Baca i Pericot Arquitectes in Barcelona. His resume includes a variety of urban design projects including the South Brooklyn Marine Terminal, Mount Tabor Reservoir and Park in Portland, and the city master plan for Tortosa, Spain; he has also worked on several buildings at various stages of development from concept design to construction documentation.

## **field operations**

### **associates**

**Michael Flynn** is a landscape and urban designer at Field Operations. He holds a BLA from California Polytechnic State University, San Luis Obispo, CA (1999) and an MLA from Harvard University, MA (2004) where he was awarded the Charles Eliot Traveling Fellowship alternate in Landscape Architecture. During his studies he spent a year studying environmental design at the ITR in Zurich, Switzerland. Prior to joining Field Operations, he worked with Chris Reed of StoSS Landscape Urbanism on multiple design competitions emphasizing landscape as a medium of organizing ecological systems. He has also worked with Alan Berger of Harvard University Graduate School of Design on his continued research of reclaiming cultural landscapes.

**Nahyun Hwang** is an architectural designer at Field Operations. She holds a BArch from Yonsei University, Seoul, Korea (1996), and a MArch from Harvard University (2001). Prior to joining Field Operations, she worked for Herzog and de Meuron on the design and construction of the new Walker Art Center, Minneapolis. She has also worked for Stan Allen Architect on the development of housing prototypes in Santiago, Chile; for OMA on the Dallas Performing Art District Masterplan and the Dallas Theater Center; and for Rafael Moneo on the design of the Los Angeles Cathedral.

**Jayyun Jung** is a landscape and urban designer at Field Operations. He holds a BA in Horticulture from Korea University (2000) and an MLA from Harvard University (2004). Prior to joining Field Operations, he worked for the Physical Resources and Planning Office at Harvard University on various campus projects including the North Campus Development Planning and LISE building project. Before that, he worked for Landworks Studio, inc in Salem, Massachusetts on various residential projects including Court Square Press building Phase II and Leisle residence.

## **field operations**

### **associates**

**Rebecca Kainer** is a landscape and urban designer at Field Operations. She holds a BLA from Texas A&M University (2000) and an MLA from the University of Pennsylvania (2002), where she was awarded the George Madden Boughton Prize for design excellence with environmental and social consciousness and the ASLA Honor Award. Currently, Rebecca is the project manager for Beekman in New York City, two plazas at the base of a high-rise building being designed by Frank Gehry. Prior to Joining Field Operations, Rebecca worked for Hargreaves Associates where she worked on Parkview West in Chicago, was the Project Manager for the 4 mile long Pena Boulevard in Denver, and was involved in all phases of the Dallas Galleria through construction completion. She also worked for Olin Partnership on Liberty Property Trust Plaza in Philadelphia and the U.S. Embassy in Berlin; for SWA Group on Tony Maron Park in Houston and Hangzhou Waterfront Implementation in China.

**Te-Hsuan Liao** is a landscape and urban designer at Field Operations. He holds a BS in Landscape Architecture from the Chinese Culture University, School of Environmental Design in Taipei (1999) and an MLA from the University of Pennsylvania (2003). Prior to joining the Field Operations, he worked for Mathur / Da Cunha in Philadelphia and DNF Design Group in Taipei. At DNF, he was a designer on several major competition entries for parks, urban design, housing and railway projects, and prepared construction documents.

**Maura Rockcastle** is a landscape and urban designer at Field Operations. She holds a BFA from Cornell University in Sculpture and Printmaking (2002) and an MLA from the University of Pennsylvania (2005) where she was awarded the Van Alen Traveling Fellowship in Landscape Architecture, an ASLA Honor Award and the Ian McHarg Prize for design excellence. Prior to joining Field Operations, she worked for Peter Walker and Partners in San Francisco on a private ranch in Texas, the Novartis Headquarters in Basel, Switzerland and on their publication Landscape Architecture Defining the Craft (April 2005). She won an open competition for the site design of an adaptive reuse project in East Falls, Philadelphia and received honorary mention for an international competition for the Grand Central Square in Caracas, Venezuela.

## field operations

### associates

**Lara Shihab-Eldin** is an architectural designer at Field Operations. She holds a BA from Brown University in Architectural History and Urban Planning (2000), where she received the Distinguished Honors Award for her thesis on refugee architecture in Beirut, Lebanon. She earned her MArch at Columbia University (2004), where she was a recipient of the William Kinne Memorial Fellowship to research timber construction in Scandinavia. Prior to joining Field Operations she was awarded the New York City Housing fellowship and worked for the New York City Department of Housing Preservation and Development. She also worked for Stephen Holl Architects on their proposal for the High Line (New York City).

**Sarah Weidner** is a landscape and urban designer at Field Operations. She holds a BA in The Growth and Structure of Cities from Haverford and Bryn Mawr Colleges (2001), where she received the Bolton Foundation Senior Award; and an MLA (2005) from The University of Pennsylvania, where she was awarded the Ian L. McHarg Prize for excellence in design, and the ASLA Honor Award for outstanding potential for contributions to the profession. Prior to joining Field Operations, Sarah worked as a fellow at Olin Partnership in Philadelphia on the Virginia Museum of Fine Arts sculpture garden and West India Club town master plan. She has also worked at Voith and Mactavish Architects on a variety of civic, institutional, and residential projects in all phases of design and construction.

**Hong Zhou** is an Associate at Field Operations. She has a BArch and MArch from Tsinghua University in Beijing, China and an MLA from the University of Pennsylvania. At Field Operations, she has developed the schematic design package for Columbia University Campus Square Project, in collaboration with Renzo Piano Building Workshop and Skidmore Owings and Merrill. Prior to joining Field Operations in 2004, she worked for Wallace Roberts and Todd (WRT), Olin Partnership, and Martha Schwartz on a variety of projects including the Fountain Plaza waterfront park in Des Moines, Iowa; Georgetown Waterfront Park in Washington, DC; renovation of Columbus Circle in Manhattan; a public transit concourse in Philadelphia; and Post Office Square in Wellesley, Massachusetts.

**project list**

**2005**

**Domino Sugar Refinery, New York**

Concept Design, in collaboration with Rafael Vinoly Architects, for redevelopment of this East River site as a mixed-income residential community, with possibly as many as 2,000 residential units, anywhere from 100,000 to 500,000 SF of retail, parking for 1,000 cars, and substantial open spaces including a 40' wide waterfront esplanade.

**Beekman Plaza, New York**

Schematic Design through Construction Observation of Beekman Plaza. In collaboration with Piet Oudolf, Field Operations is leading the design of Beekman Plaza's West Plaza and William's Plaza, both significant public spaces around the base of a new residential tower by Frank Gehry. The design offers an innovative approach toward both paving and surfacing, where grasses and plants emerge through holes and graded openings in the surface.

**The Solomon R. Guggenheim Foundation, Guadalajara Museum Park Project , Guadalajara, Mexico**

In collaboration with TEN Arquitectos, Field Operations won this significant competition for the design of the Foundation's first significant outdoor exhibition space. The design proposes a gradient field of varied, ambient spaces which promote a variety of social interactions and experiential conditions for the 16 acre parcel of land at the edge of "La Barranca," a 610 meter deep canyon of the Rio Santiago.

**Cupey Corridor, San Jaun, Puerto Rico**

Master Plan through Construction Documentation of landscape, pedestrian and vehicular linkages for the new Tren Urbano with University of Puerto Rico Botanical Garden, San Juan ecological corridor and the Rio Piedras River.

**2004**

**The High Line, Framework Plan and Design of Section 1, New York**

Framework Plan Framework Plan for the design of a distinct 1.45 mile new public space on top of an abandoned elevated railway that spans 22 city blocks in between and through buildings along the west side of Manhattan. This project, in collaboration with Diller Scofidio + Renfro, includes the design of the first 4 blocks as an experience marked by slowness, distraction and an other-worldliness that preserves the strange character of the High Line.

**Heng-Chun Tropical Botanical Garden, Heng-Chun, Taiwan**

Field Operations was commissioned to design the "Kenting Forest Recreation Area and Hengchun Tropical Botanical Garden" in Hengchun, Taiwan. The Hengchun Tropical Botanical Garden is a multi-purpose compound that covers the functions of research, preservation, and recreation. The Garden is abundant with plant and animal species, as well as unique coral reef formed geology, and offers rich scenic and educational opportunities.

**project list**

**2004**

**Fresh Kills Park, Staten Island, New York**

Master Plan for 2,200 acres of landfill to be converted into an innovative, ecologically diverse and culturally active new parkland. The project entails an extensive new framework plan for the creation of new habitat (wetland, grassland and woodland), new activity areas (passive and active recreation, event spaces, structures and facilities), and circulation (new park drives, bicycle paths, pedestrian trails). The Master Plan includes Design Development for three sub-areas, to be constructed in Phase 1 (2007).

**Columbia University, Open Space Master Plan and Central Square Design, New York**

Open Space Master Plan for Columbia University's new Manhattanville Campus located near the Hudson River between 125th - 133rd Street, including the design of a new central square, north-south passageway, streetscapes, and setback details in collaboration with SOM and Renzo Piano Building Workshop.

**Hellenikon Metropolitan Park and Redevelopment, Athens, Greece**

Master Plan and Urban Design for the 1300-acre site of the old Athens International Airport. The project includes plans for a 3 million sf convention center and exhibition hall, two hotels, mixed-use development, and an 800-acre park, with extensive sports facilities, theme gardens, arboretum, reforested stream corridors, and beachfront promenade.

**University of Puerto Rico, Río Piedras Campus, San Juan, Puerto Rico**

Master Plan for 300-acre campus in the heart of San Juan, including building, programming and infrastructure analysis, and the detail design of public spaces, paths and streetscapes, to begin construction in 2004.

**Botanical Garden, San Juan, Puerto Rico**

Master Plan for 260-acre botanical garden with linkages to the San Juan ecological corridor and the Río Piedras River. The Master Plan includes Design Development of public spaces, display exhibits and floodplain restoration, to begin construction in 2004.

**2003**

**Lardner Point, Delaware Riverfront, Philadelphia**

Design Development for 8-acre riverfront park in Philadelphia, integrating storm-water treatment wetlands, ecological exhibits and riverbank restoration with significant new public space, to be constructed in 2004.

**Arroyo Parkway, Pasadena, California**

Master Plan and Design Development for a major entry boulevard, incorporating new streetscape with lighting, paving, furniture and art work, to be constructed in 2004.

**project list**

**2002**

**Denver International Airport, Denver, Colorado**

Master Plan for a 3,000-foot easement along 10 miles of Peña Boulevard, incorporating ecological and arts programs and a dramatic arrival/ departure sequence for the airport.

**Bridesburg Redevelopment Plan, Philadelphia, Pennsylvania**

Development Plan for 2000 housing units and commercial properties, linked with a system of public spaces incorporated into a storm water management landscape in North Philadelphia.

**Brewerytown Housing Development, Philadelphia, PA**

Development Plan for 250 new townhouses, with streetscapes and public spaces, to be constructed in 2004.

**Private Estate and Gardens, Litchfield, CT**

**2001**

**North Delaware Riverfront, Philadelphia, Pennsylvania**

Master Plan including urban design, landscape architecture, housing design and economic development strategy, and Design Development for 8 square-miles of post-industrial riverfront in North Philadelphia.

**French Embassy Garden, French Cultural Services, New York, New York**

Design Development and Construction Documents for a public garden and event space for the French Embassy on Fifth Avenue. Constructed 2003.

**Eastern State Penitentiary Park, Philadelphia, Pennsylvania**

Design Development of a new 4-acre community park around and within the walls of the former Eastern State Penitentiary, now a public museum, in Philadelphia.

**Cleveland Canal Basin, Cleveland, Ohio**

Master Plan, landscape and architectural design for the canal and surrounding basin in downtown Cleveland.

**2000**

**Downsview Park, Toronto, Ontario**

Invited submission to a six-team international competition for reuse and ecological revitalization of a 640-acre military base to be developed as a new urban park.

**Irish Hunger Memorial, Vesey Park, New York, New York**

Invited submission to a design competition for a 2-acre park commemorating the Irish Famine; in collaboration with artist Kiki Smith.



## **field operations**

### **project list**

**1999**

#### **Alvsjo Town Plan, Stockholm, Sweden**

Planning process and urban design framework for a town struggling with competing interests amongst a corporate business campus (Ericcson), a National Exhibition Complex (SIF), a regional transit authority, local residents, and environmentalists.

#### **Main Street, Houston, Texas**

Planning and concept design guidelines for the ten-mile long Main Street, Houston, with a special emphasis on the Astrodome district; in collaboration with TEN Arquitectos, Ali Rahim, and SLA.

#### **General Motors Facility, Detroit, Michigan**

Open space and urban design study; in collaboration with HLW Strategies

#### **Private House, Los Angeles, California**

#### **Private Estate, Greenwich, CT**

#### **Prior to 1999**

Töölönlahti Parks, Helsinki, Finland - Competition design

Los Angeles River, California - Planning and design study

Greenpoint Harborfront Park, Long Island, New York – Competition design (first prize)

Governors Island, New York, New York – Competition design (finalist)

Warrington Town Square, England – Competition design (first prize)

Camden Waterfront Urban Renewal, New Jersey - Design study

Lincoln Harbor Waterfront Redevelopment, New Jersey (Wallace, Roberts, & Todd, 1986-87)

Thames Riverfront Master Plan and Design(Richard Rogers and Partners, 1982-84)

Royal Docks Redevelopment, London – Master Plan and Design (Richard Rogers and Partners, 1982-84)

Liverpool International Garden Festival – Master Plan (Gillespie and Partners, 1980-82)

## field operations

- honors and awards**
- First Prize, Guggenheim Museum Design Competition, Guadalajara, 2005
  - The New York City Art Commission Award for Excellence in Design, 2004
  - American Academy of Arts and Letters Award for Architecture, 2004
  - First Prize, The High Line Design Competition, New York, 2004
  - First Prize, Hengchun Botanic Garden Competition, 2004
  - Esquire Magazine's Best and Brightest Award, 2004
  - First Prize, Fresh Kills Landfill to Landscape Design Competition, City of New York, 2001
  - Design Award, Architectural League of New York, 2001
  - Daimler-Chrysler Design Award for Innovation in Design, 2000
  - Fellow of the Urban Design Institute, 1999
  - First Prize, French Embassy Garden Competition, New York, 2000
  - Finalist for Parc Downsview Park Design Competition, Toronto, 2000
  - Finalist for Irish Hunger Memorial Park, Battery Park City, New York, 2000
  - AIA International Book of the Year Award for Taking *Measures Across the American Landscape*, 1997.
  - First Prize, Greenport Waterfront Park Competition, Long Island, 1997
  - Fourth Prize, Toolonlahti Parks Competition, Helsinki, 1997
  - Honorable Mention, Governor's Island Competition, New York, 1996
  - First Prize, Warrington Town Park Competition, 1989

## field operations

### publications

*Taking Measures Across the American Landscape*, James Corner and Alex MacLean, Yale University Press, 1996.

*Recovering Landscape: Essays in Contemporary Landscape Architecture*, ed. James Corner, Princeton Architectural Press, 1999.

*Landscape Urbanism: The Machinic Landscape*, ed. Mohsen Mostafavi, Architectural Association, 2004

*Designing New York's Waterfront*, Ray Gastil, Princeton Architectural Press, 2003.

*Designing the New World Trade Center*, ed. Max Protetch, John Wiley, 2002.

"Field Operations," *ArchiLAB*, ed. Beatrice Simonet, Paris, 2002.

"Fresh Kills," *Praxis: Landscape*, ed. Ashley Schafer, 2002.

"Fresh Kills," *Lotus Navigator*, 2002

*Parc Downsview Park*, ed. Julia Czerniak, Prestel, 2002.

"Design Intelligence and the New Economy", Michael Speaks, *Architectural Record*, Jan 2001: 72-76.

"Park=City?", *Landscape Architecture Magazine*, March 2001: 80-89.

"Learning from Downsview", Alan Berger, *Landscape Architecture Magazine*, March 2001: 132.

"Field Operations", Newsline: *Columbia School of Architecture Newsletter*, Spring 2001.

"Pocket Culture: The French Embassy Garden", Heather Hammatt, *Landscape Architecture Magazine*, January 2001: 34-35.

"Downsview Park, Toronto", *Lotus International*, 2001, vol. 109: 52-59.

"Park=City, Designing Downsview Park" *Van Alen Report* 8, 2000.

"Environment as Process", Marco Polo, *Canadian Architect*, October 2000: 14-19.

"Field Operations", *Architectural Design*, London, 1998.

Filename: 050930\_FO profile\_full.doc  
Directory: M:\MARKETING 2005\02\_PROPOSAL  
COMPONENTS\01\_FO firm profile  
Template: C:\Documents and Settings\s bainbridge\Application  
Data\Microsoft\Templates\Normal.dot  
Title:  
Subject:  
Author: FO  
Keywords:  
Comments:  
Creation Date: 9/30/2005 4:56:00 PM  
Change Number: 10  
Last Saved On: 11/29/2005 12:30:00 PM  
Last Saved By: sbainbridge  
Total Editing Time: 59 Minutes  
Last Printed On: 11/29/2005 12:42:00 PM  
As of Last Complete Printing  
Number of Pages: 19  
Number of Words: 5,505 (approx.)  
Number of Characters: 31,382 (approx.)

**field operations**

## **East Darling Harbour**

Sydney, Australia





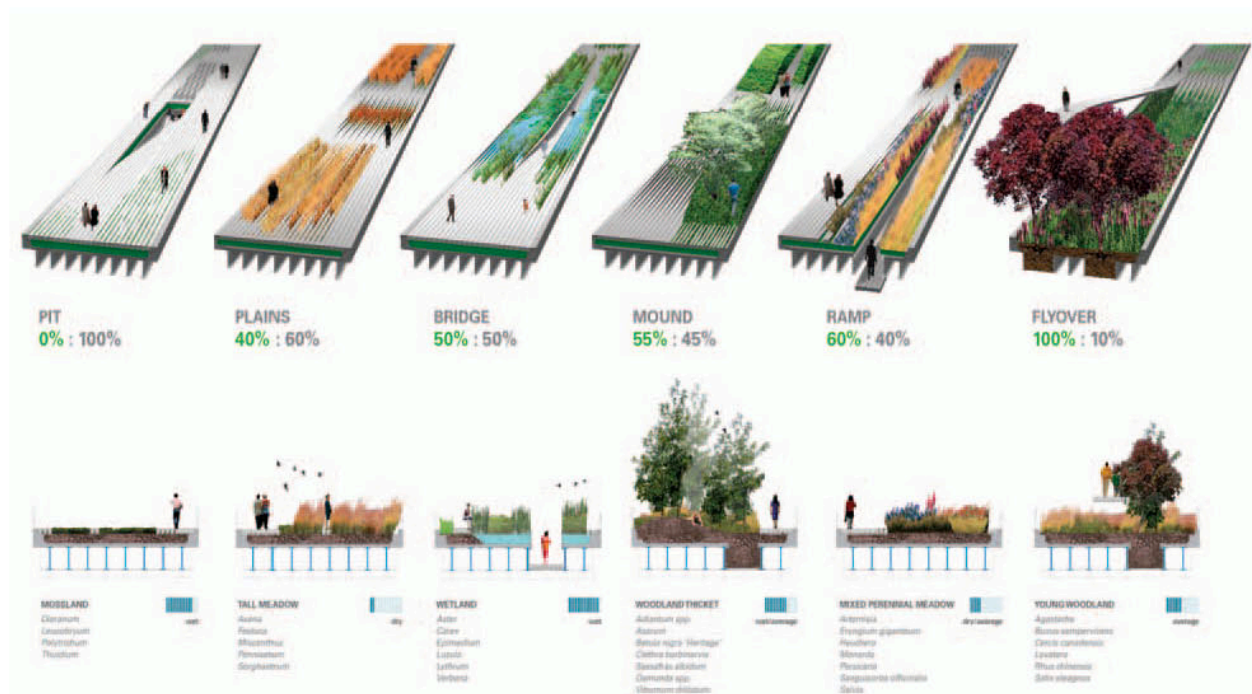
## The High Line, Phase I

New York, New York

"Agri-Tecture" was selected as the winning entry for the High Line International Design Competition in July of 2004. Field Operations, in collaboration with Diller Scofidio + Renfro, was subsequently commissioned to develop a framework plan and design the first section of the High Line, a 1.2-mile long abandoned elevated freight rail line along the west side of lower Manhattan. This 5.9 acre stretch of open space spans 20 city blocks in between and through buildings from Gansevoort Street, through the meat packing district and West Chelsea, up to 30th Street, ending at the Hudson Rail Yards. The existing substrate consists primarily of rock ballast, railroad ties, steel rails and reinforced concrete. Over the past 24 years since the last train ran on the High Line in 1980, a thin layer of soil has formed in some areas and an opportunistic landscape of early successional species has begun to grow.

Inspired by the melancholic, "found" beauty of the High Line, where nature has reclaimed a once-vital piece of urban infrastructure, we aim to re-fit this industrial conveyance into a post-industrial instrument of leisure. In stark contrast to the speed of Hudson River Park, the singular linear experience of the new High Line landscape is marked by slowness, distraction and an other-worldliness that preserves the strange, wild character of the High Line.

While it is essential to preserve the High Line's unexpected beauty, it is equally important not to underestimate the intended use, popularity, and scale of this project as a new public space. This notion underpins the overall strategy – a system of material organization that allows for varying ratios of hard to soft surface that transition from high intensity areas (100% hard) to richly vegetated biotopes (100% soft), with a variety of experiential gradients in between.





**field operations**

**The High Line, Phase I**

New York, New York





## Columbia University Open Space & Square

New York, NY

Field Operations, in collaboration with Renzo Piano Building Workshop and Skidmore Owings & Merrill, is commissioned to design the open space system and the new public square for the Columbia University's new Manhattanville campus. The design identifies the unique site context of elevated viaduct and subway line, transportation pattern, its proximity to the river and the characters of the existing neighborhoods.





**field operations**

**Columbia University Open Space & Square**  
New York, NY





**field operations**

**East Darling Harbour**

Sydney, Australia





**field operations**

**Parque del Río Manzanares**

Madrid, Spain

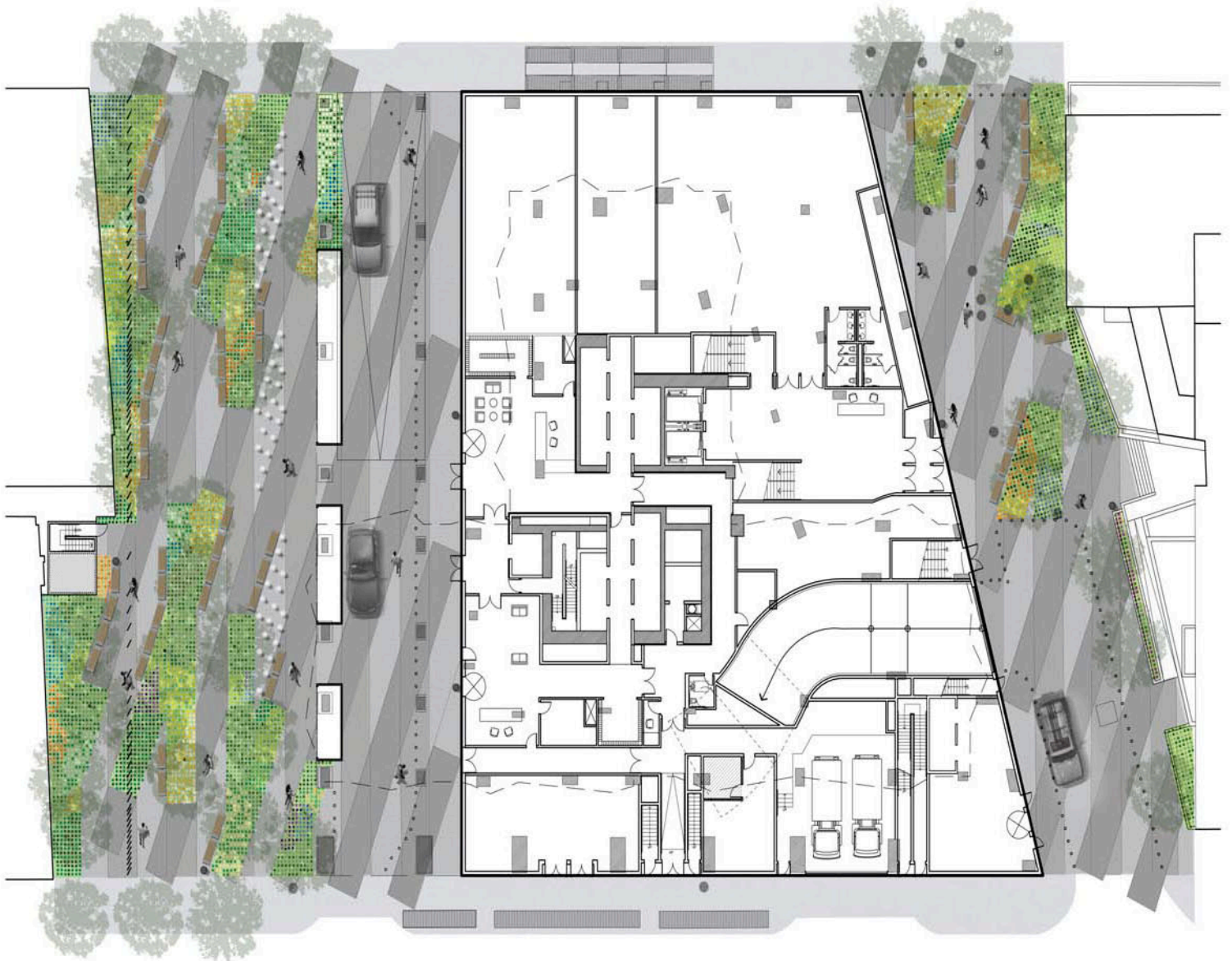




## Beekman Plaza

New York, New York

In collaboration with Piet Oudolf, Field Operations is leading the design of Beekman Plaza and Beekman Mall, both significant public spaces around the base of a new residential tower by Frank Gehry. The design offers an innovative approach toward both paving and surfacing, where grasses and plants emerge through holes and graded openings in the surface. Furnishings and lighting are generously arranged, in loose social formations set within the plantings.





**field operations**

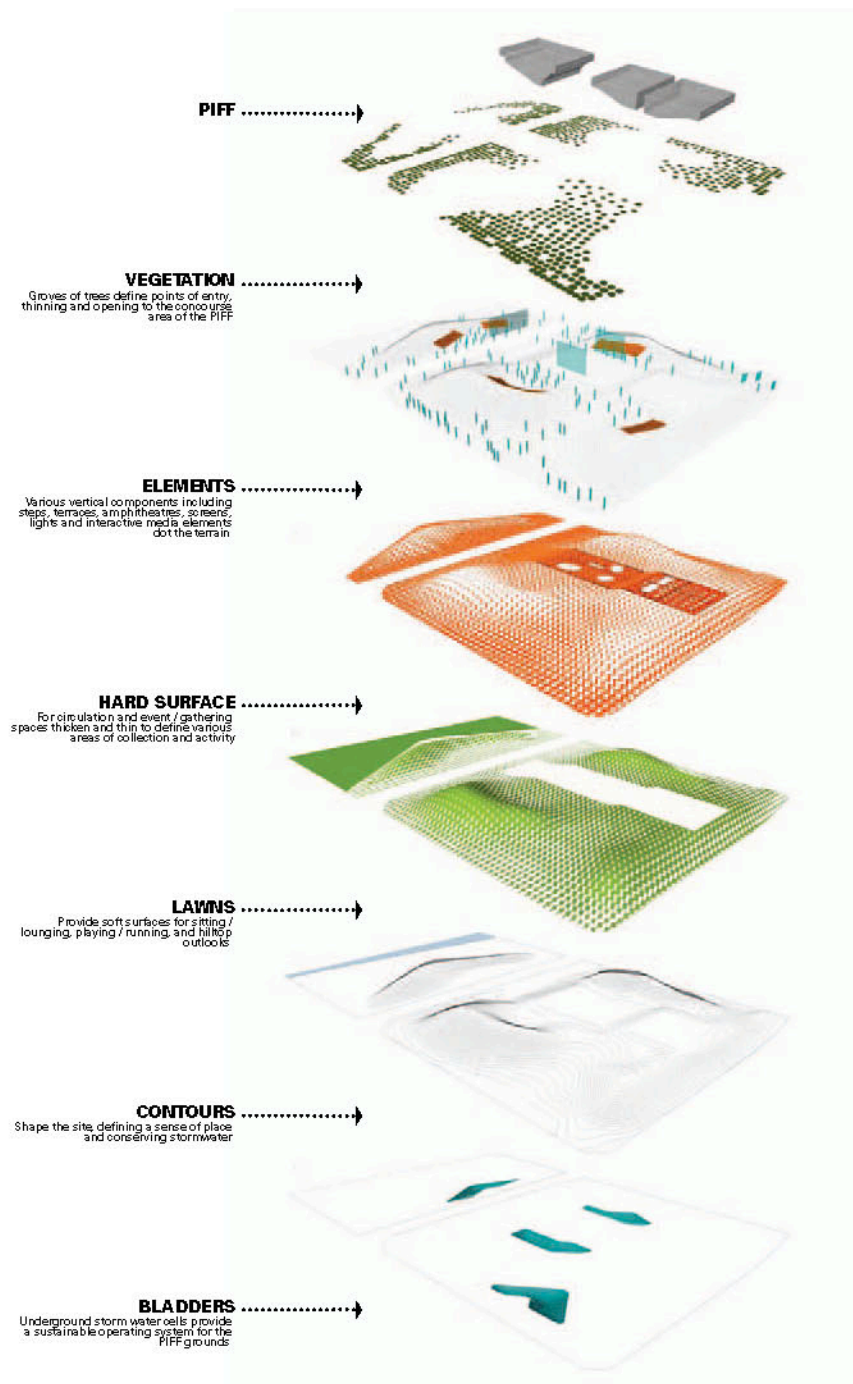
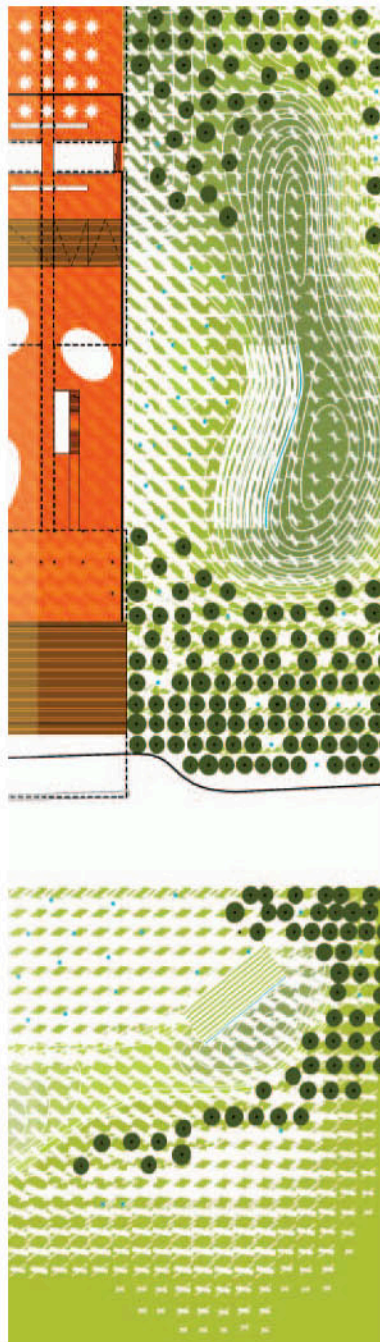
**Beekman Plaza**  
New York, New York





## The Busan International Film Festival and Culture Park

Busan, Korea

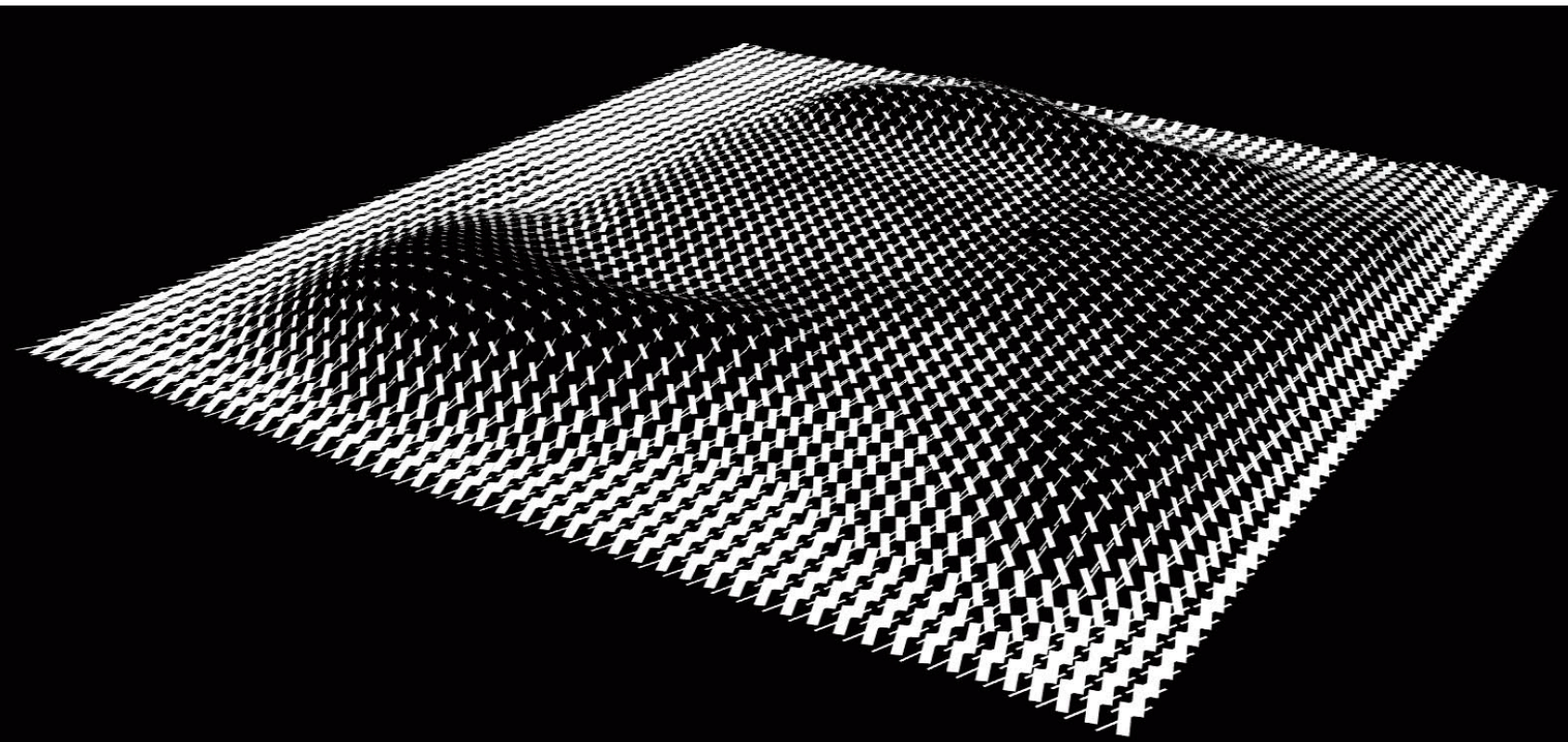




**field operations**

**The Busan International Film Festival and Culture Park**

Busan, Korea



**fo**



**field operations**

**Parque del Río Manzanares**  
Madrid, Spain





## **University of Puerto Rico Botanical Garden**

San Juan, Puerto Rico

The Puerto Rico Botanical Garden is located at the heart of the greater Metropolitan of San Juan. Bounded by the Rio Piedras and halved by a six lane thoroughfare [PR 1] the 250 acres parcel is the single largest open, unbuilt land in the region. This positions the Garden to provide a new and much-needed urban public open space for San Juan residents, Puerto Rico and visitors. The Botanical Garden is envisaged as an urban gateway enhancing the quality of urban life and improving the attractiveness of San Juan as a destination city.

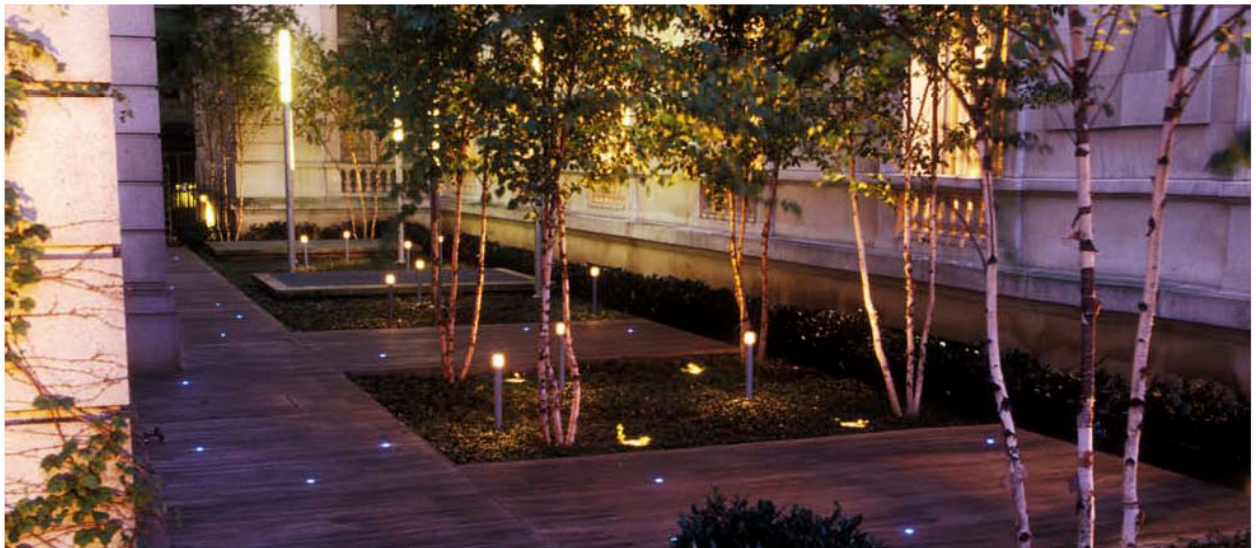
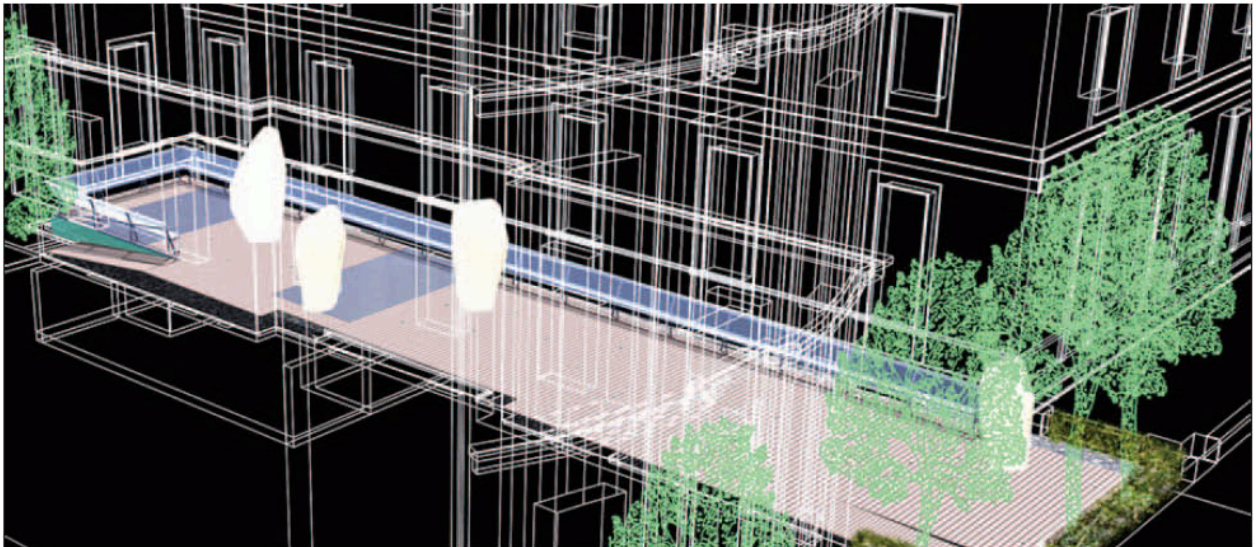




## **French Embassy Garden**

Fifth Avenue, New York

Located on fifth Avenue between the offices of the French Embassy Cultural Services and the New York University Institute of Fine Arts, a small (300sf) garden intended to showcase new ideas in landscape architecture and create a new public identity for French culture was commissioned in 1999. Field Operations was selected to design the garden by a unanimous jury in an invited international competition. Sited opposite Central park along the Museum Mile, the garden is today highly visible to hundreds of daily passersby. With a modest budget and various other constraints, Field operations designed a simple, ambient space, activated through a grove of River Birch, zinc light columns, and minimalist wood deck detailing.





**field operations**

**Museum of the History of Jews in Warsaw**  
Warsaw, Poland

